



TECHLIGHT
INNOVATION IN ILLUMINATION

Catalog Number

Project

Type

FEATURES & SPECIFICATIONS

APPLICATION — The Techlight Navigator Interchangeable Bollard offers versatility across a wide range of applications. It can be used for small-area lighting, such as illuminating walkways, pathways, and driveways. In architectural and landscape settings, it can provide accent lighting, enhance driveways and entrances, and illuminate pathways. For commercial and municipal applications, it can be used for campus lighting, park lighting, illuminating plazas and squares, enhancing the ambiance of hospitality venues, and illuminating retail spaces. In safety and security applications, it can provide perimeter lighting, serve as emergency lighting, and illuminate security checkpoints.

CONSTRUCTION — The Techlight Navigator Interchangeable Bollard is meticulously crafted with a focus on durability and longevity. The housing is constructed from high-quality, corrosion-resistant extruded aluminum, ensuring long-lasting performance in various outdoor environments. The robust construction includes features designed to enhance heat dissipation, ensuring optimal operating temperatures and maintaining the bollard's performance over time.

FINISH — The Techlight Navigator Interchangeable Bollard is available in two elegant and durable finish options: Black (BK) and Bronze (BZ). These finishes are carefully selected to complement a variety of architectural styles and outdoor environments.

OPTICAL SYSTEM — The bollard incorporates Techlight Color Select technology, offering a choice of Color Temperatures (CCT): 3000K, 4000K, or 5000K. This allows for customization to suit specific lighting requirements and create the desired ambiance.

ELECTRICAL SYSTEM — The Techlight Navigator Interchangeable Bollard is designed for reliable and efficient operation. It operates from a standard 120-277V input voltage and incorporates advanced electrical components. The bollard features 4kV surge protection with a 10kV SPD added to safeguard against power surges, ensuring long-term performance and reliability. Engineered for diverse climates, the bollard operates within a temperature range of -40°C to +40°C (-40°F to 104°F) and maintains an impressive L70 lifetime exceeding 100,000 hours at 25°C (77°F) ambient fixture temperature. The bollard is designed to meet stringent

NAV SERIES

Selectable-Interchangeable Bollard



FCC Part 15, Part B, Class A standards for conducted and radiated emissions.

MOUNTING — The bollard base, ordered separately, provides a secure and stable foundation for the fixture. It includes anchor bolts and a template to simplify installation. Offering flexibility in installation, the bollard base supports both in-ground and surface mount options. For added convenience, the bollard is compatible with legacy 8" and 10" bollard bases when used with the optional retrofit plate.

WARRANTY — Techlight stands behind the quality and performance of the Navigator Interchangeable Bollard with a comprehensive 3-year warranty, providing customers with peace of mind and long-term value.

COMPLIANCE — The Techlight Navigator Interchangeable Bollard is designed and manufactured to meet rigorous industry standards. It is certified for wet locations, meeting the IP65 rating for protection against dust and water ingress. Additionally, it achieves an IK10 impact rating, demonstrating its ability to withstand impacts and maintain its integrity.

ORDERING INFORMATION

Choose the bold face options for the appropriate luminaire configuration for your application and enter on the line above each fixture attribute. Accessories may be factory installed, depending on the particular accessory chosen, but still be ordered as a separate line item.

NAV	SW	SC	
SERIES	TOP	WATTAGE	CCT
DT = Dome Top FT = Flat Top FCO ² = Full Cut Off	SW ¹ = Field Selectable 14W, 19W, or 24W	SC ¹ = Field Selectable 3000K, 4000K, or 5000K	BK = Black BZ = Bronze

	14W		
	3000K	4000K	5000K
DT (Dome Top)	1900 Lm	1960 Lm	1960 Lm
FT (Flat Top)	1960 Lm	1960 Lm	1900 Lm
FCO (Full Cut Off)	1610 Lm	1640 Lm	1680 Lm

	19W		
	3000K	4000K	5000K
DT (Dome Top)	2600 Lm	2690 Lm	2730 Lm
FT (Flat Top)	2600 Lm	2690 Lm	2730 Lm
FCO (Full Cut Off)	2300 Lm	2250 Lm	2230 Lm

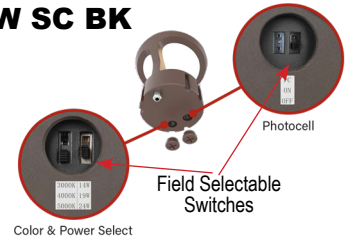
	24W		
	3000K	4000K	5000K
DT (Dome Top)	3230 Lm	3360 Lm	3360 Lm
FT (Flat Top)	3230 Lm	3360 Lm	3360 Lm
FCO (Full Cut Off)	2870 Lm	2900 Lm	2960 Lm

EXAMPLE:

NAV FCO SW SC BK

NOTES

- 1 = Factory preset to 24W and 5000K / Photocell: ON
- 2 = Starlight Friendly only applies to Full Cut Off.



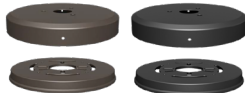
ACCESSORIES (Order as separate line items)

KABNAV Anchor Bolt Kit
Includes (3) bolts, hardware, and template.



RNAV BZ Retrofit Plate Bronze - Includes adaptor and cover. Used with legacy 8" and 10" bollards.

RNAV BK Retrofit Plate Black - Includes adaptor and cover. Used with legacy 8" and 10" bollards.



S180NAV BZ 180° Shield Bronze
Used on Dome and Flat Top Bollard Heads.

S180NAV BK 180° Shield Black
Used on Dome and Flat Top Bollard Heads.



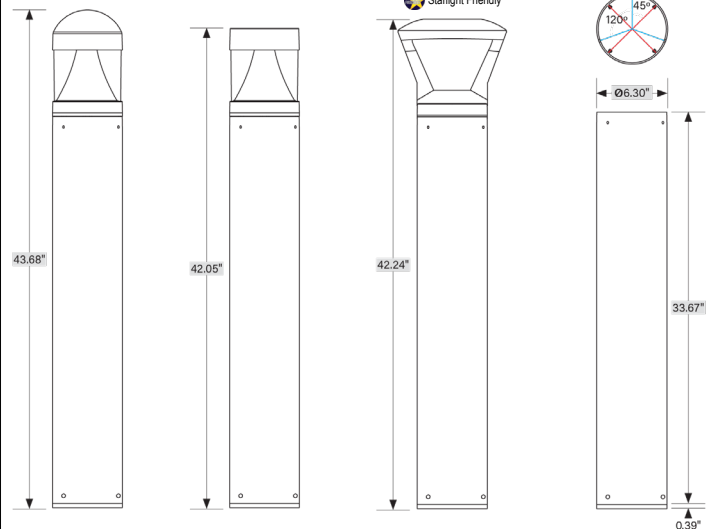
NAV DT SW SC BZ
W/ S180NAV BZ (180° Shield)

NAV FT SW SC BK
W/ S180NAV BK (180° Shield)



FIXTURE DIMENSIONS

DOMESTOP FLAT TOP FULL CUT OFF BOLLARD BASE



www.techlight.com

All dimensions and specifications are subject to change without notice.

REV: 20250307-02