



Catalog Number	
Project	Type

FEATURES & SPECIFICATIONS

APPLICATION — The WPB 2-3/8" OD Vertical Tenon Wood Pole Bracket is designed to mount Techlight light fixtures that are equipped with a 2AF Adjustable Knuckle onto a 2-3/8" OD vertical tenon. Thru bolts by others.

CONSTRUCTION — The heavy duty mid-pole bracket is constructed A36 steel channel. A 2-3/8" OD x 4-3/8" tall vertical tenon is provided for fixture mounting. Mounting hardware provided by others.

FINISH — A Super Durable Polyester powder coat finish is electrostatically applied in our state of the art paint facility. Standard colors available: Black, Bronze, US Green, White. Custom colors available upon request.

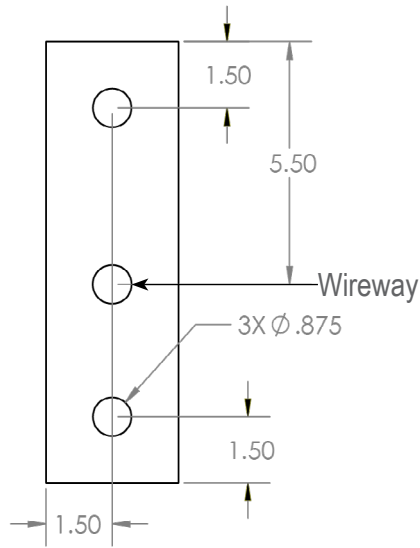
ORDERING INFORMATION

Choose the bold face options for the appropriate luminaire configuration for your application and enter on the line above each fixture attribute. Accessories may be factory installed, depending on the particular accessory chosen, but still be ordered as a separate line item.

EXAMPLE:
WPB-BZ

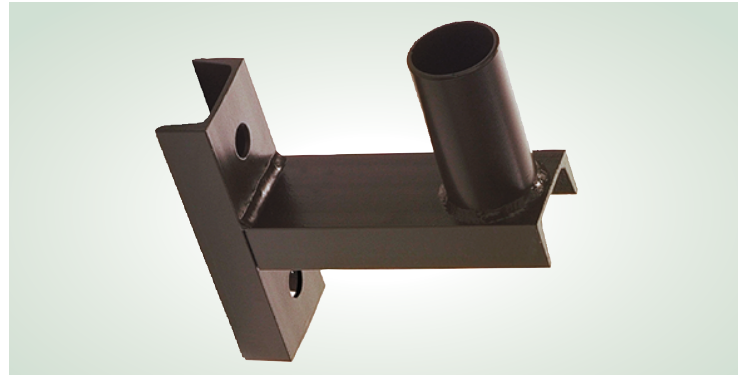
WPB	
SERIES	COLOR TEMP
	BZ = Bronze BK = Black SLV = US Green WH = White SP = Special GALV = Hot Dip Galvanized

MOUNTING PATTERN



WPB

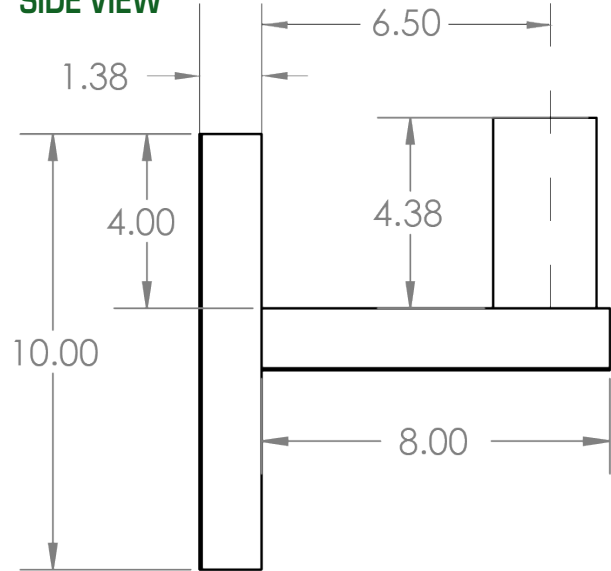
2-3/8" OD Vertical Tenon Wood Pole Bracket



SERIES	TENON HEIGHT	LENGTH & WIDTH	WEIGHT	MAX LOAD WEIGHT
WPB	4.38"	9.375" x 3.00"	7 lbs	75 lbs

BRACKET DIMENSIONS

SIDE VIEW



TOP VIEW

