



LED DIRECT BURIAL INGROUND LIGHT

Catalog Number	
Project	Type

FEATURES & SPECIFICATIONS

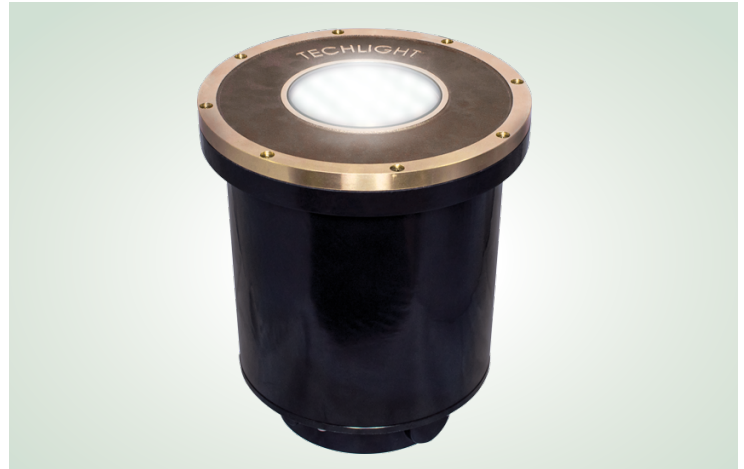
APPLICATION — The TDBX line of LED Landscape Burial Lights are the most versatile LED fixtures on the market today. Various beam spreads and color temperatures allow for a customized finish to any property. The high end commercial grade system was designed for 120V-277V operation commercial applications.

CONSTRUCTION — The rough-in housing is made of black 25% glass filled polyester composite that will not flake, peel or corrode. The LED light source is housed within an 88% copper bronze alloy heat sink module for maximum heat dissipation. Internal cabling features anti-siphon wiring to prevent water intrusion as well as IP68 quick connects for quick change out and ease of installation. Silicone O-rings work with the CNC precision machined components to insure proper sealing. All fasteners provided are stainless steel. Trim plate made of 88% copper bronze alloy.

OPTICAL SYSTEM — A molded polycarbonate 82mm compact reflector is optimized for use with the LED light source allowing the fixture to be compact while using high density modern COB LEDs (80 CRI standard). The reflector smooths out and removes any unwanted color-over-angle artifacts from the beam. A 15mm low-iron tempered glass lens protects the light source. Also available with 90mm TIR Acrylic Optic, designed specifically to work with COB LEDs to achieve a smooth and consistent pattern for specific beam angles. An aiming adjustment screw allows the optical assembly to be tilted up to 15° in any direction and locked into place.

ELECTRICAL SYSTEM — Fixture operates at 120V-277V. Compatible with TRIAC (forward-phase or leading-edge), ELV (reverse-phase or trailing-edge) and 0-10 V dimmers. Order DLP option if dimming of TDBX luminaire is required. 10kV internal surge protection provided standard.

MOUNTING — Fixtures are designed to be in-ground burial lights and should be installed according to the installation instructions made available by Techlight. Proper drainage and substrate must be provided around



SERIES	HOUSING HEIGHT	DIAMETER
TDBX	10.87"	9.50"

the fixture. Two 3/4" and two 1/2" conduit entries are supplied on the underside of the housing. 1/2" conduit side entries available upon request. Concrete pour kits available (see Accessories). Rough-in housing may be pre-shipped⁴ at customer's request, enter FS as pre-fix and order TDBX-RIH (use ordering guide on page 2).

LISTINGS — ETL suitable for wet locations. IP68 ^{ANSI} rated to 2 meters. Meets US and Canadian safety standards. -40°C to 40°C ambient operation. RoHS Compliant.

ORDERING INFORMATION

Choose the bold face options for the appropriate luminaire configuration for your application and enter on the line above each fixture attribute. Accessories may be factory installed, depending on the particular accessory chosen, but still be ordered as a separate line item.

EXAMPLE:

TDBX 20DO 4L CW 1 BK SRL

Fixture W/ Rough In Housing (RIH) Complete Fixture

For LED Module Rough In Housing (RIH) Pre-shipped⁴ see page 2.

TDBX						
SERIES	NOMINAL DISTRIBUTION	NOMINAL OUTPUT	COLOR TEMP	VOLTAGE	TRIM FINISH	OPTIONS
	15DO = 15° Optic 20DO = 20° Optic 25DR = 25° Reflector 35DO = 35° Optic 40DR = 40° Reflector 45DO = 45° Optic 60DR = 60° Reflector 90DR = 90° Reflector <i>Note: Distribution patterns are provided with either an internal reflector or internal refracting optic. See pg 2 for product images of each.</i>	25L = 2500 Lumens, 25W 4L = 4000 Lumens, 36W 45L = 4500 Lumens, 42W 5L = 5000 Lumens, 48W 6L = 6000 Lumens, 56W	CW = Cool White 5000K NW = Neutral White 4000K WW = Warm White 3000K	1 = Multi-Volt ¹	BLANK = Natural Brass Finish ² BZ = Bronze Powder Coat Finish ³ BK = Black Powder Coat Finish ³ AC = Aged Copper Finish Plated BC = Bright Copper Finish Plated BN = Brushed Nickel Finish Plated	SCE = 1/2" Side Conduit Entry DLP = Dimming Leads Pulled SRL = Slip Resistant Lens

ACCESSORIES (Order as separate line items)

- 126925⁴** TDBX-RIH
- 126926** TDBX-PK Concrete/Paver Pour Kit

NOTES

- 1 = Multi-Volt is an auto ranging power supply from 120V to 277V input.
- 2 = Additional cost for all Trim Finish Coats, outside of "Blank", natural brass finish. See Price Guide for additional pricing info.
- 3 = Bronze and Black finishes consist of a polyester powder coat applied to the exposed areas of the cast lens frame only. If no finish is specified ("Blank" option), the lens frame will be provided as natural brass finish.
- 4 = **To have rough-in housing pre-shipped**, please enter purchase order with two separate line items: Fixture catalog string with the prefix "FS" for Finishing Section. (see page 2 for ordering chart)
 Example: **FS-TDBX20DO4LCWDBZSRL**
 Then on the second line order TDBX-RIH (Rough-In Housing) along with either: K126925 (RIH&Paver Kit) or K126925-SCE (RIH&Paver Kit w/Side Conduit Entry)
 Example: **TDBX-RIH K126925 or K126925SCE**



TDBX LED DIRECT BURIAL INGROUND LIGHT

LED Module W/O Rough In Housing (RIH) Pre-shipped

TDBX-RIH is pre-shipped when ordered along with part numbers prefixed with "FS" and TDBX-RIH⁴.

ORDERING INFORMATION

Choose the bold face options for the appropriate luminaire configuration for your application and enter on the line above each fixture attribute. Accessories may be factory installed, depending on the particular accessory chosen, but still be ordered as a separate line item.

EXAMPLE:

Line1: FS-TDBX 20DO 4L CW 1 BK SRL

Line2: TDBX K126925

Line1

FS-TDBX						
SERIES	NOMINAL DISTRIBUTION	NOMINAL OUTPUT	COLOR TEMP	VOLTAGE	TRIM FINISH	OPTIONS
	15DO = 15° Optic 20DO = 20° Optic 25DR = 25° Reflector 35DO = 35° Optic 40DR = 40° Reflector 45DO = 45° Optic 60DR = 60° Reflector 90DR = 90° Reflector Note: Distribution patterns are provided with either an internal reflector or internal refracting optic. See pg 2 for product images of each.	25L = 2500 Lumens, 25W 4L = 4000 Lumens, 36W 45L = 4500 Lumens, 42W 5L = 5000 Lumens, 48W 6L = 6000 Lumens, 56W	CW = Cool White 5000K NW = Neutral White 4000K WW = Warm White 3000K	1 = Multi-Volt ¹	BLANK = Natural Brass Finish ² BZ = Bronze Powder Coat Finish ³ BK = Black Powder Coat Finish ³ AC = Aged Copper Finish Plated BC = Bright Copper Finish Plated BN = Brushed Nickel Finish Plated	SCE = 1/2" Side Conduit Entry DLP = Dimming Leads Pulled SRL = Slip Resistant Lens

Line2

TDBX-RIH	
TDBX-RIH	OPTIONS
TDBX-RIH = Rough In Housing	K126925⁴ = TDBX-PK with TDBX-RIH K126925SCE⁴ = TDBX-PK with TDBX-RIH and 1/2" Side Conduit Entry 126925⁴ = TDBX-RIH only 126925SCE⁴ = TDBX-RIH & 1/2"(SCE) Side Conduit Entry only

ACCESSORIES (Order as separate line items)

126926 TDBX-PK Concrete/Paver Pour Kit

NOTES

- 1 = Multi-Volt is an auto ranging power supply from 120V to 277V input.
- 2 = Additional cost for all Trim Finish Coats, outside of "Blank", natural brass finish. See Price Guide for additional pricing info.
- 3 = Bronze and Black finishes consist of a polyester powder coat applied to the exposed areas of the cast lens frame only. If no finish is specified ("Blank" option), the lens frame will be provided as natural brass finish.
- 4 = **To have rough-in housing pre-shipped**, please enter purchase order with two separate line items: Fixture catalog string with the prefix "FS" for Finishing Section.
Example: **FS-TDBX20DO4LCWDBZSRL**
Then on the second line order TDBX-RIH (Rough-In Housing) along with either: K126925 (RIH&Paver Kit), K126925-SCE (RIH&Paver Kit w/ 1/2" SCE), 126925 (TDBX-RIH only), or 126925SCE (TDBX-RIH & 1/2" SCE only)
Example: **TDBX-RIH K126925**



TDBX LED DIRECT BURIAL INGROUND LIGHT

DELIVERED LUMEN CHARTS

TDBX (80CRI)	25L (600mA, 25W)			4L (900mA, 36W)			45L (1050mA, 42W)			5L (1200mA, 48W)			6L (1400mA, 57W)		
	CW	NW	WW	CW	NW	WW	CW	NW	WW	CW	NW	WW	CW	NW	WW
15DO = 15° Optic	2340	2315	2199	3540	3500	3325	4081	4037	3835	4680	4629	4398	5441	5383	5113
20DO = 20° Optic	2388	2362	2244	3609	3570	3391	4164	4119	3913	4775	4723	4487	5552	5492	5217
25DR = 25° Reflector	2767	2737	2600	4182	4137	3930	4826	4773	4534	5533	5473	5199	6434	6364	6046
35DO = 35° Optic	2319	2293	2179	3505	3466	3293	4044	4000	3800	4637	4586	4357	5392	5333	5066
40DR = 40° Reflector	2796	2766	2627	4226	4180	3971	4876	4823	4582	5591	5531	5254	6502	6431	6109
45DO = 45° Optic	2187	2164	2055	3306	3270	3107	3815	3773	3585	4374	4327	4110	5086	5031	4779
60DR = 60° Reflector	2699	2670	2537	4080	4036	3834	4708	4657	4424	5398	5340	5073	6277	6209	5899
90DR = 90° Reflector	2758	2728	2591	4168	4123	3917	4810	4757	4519	5515	5455	5182	6413	6343	6026

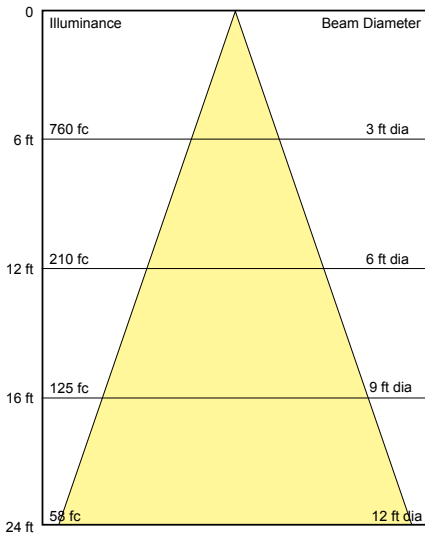
NOTE: To calculate delivered lumens with the 90 CRI LED option, multiply the delivered lumens of the desired configuration by x0.861.

ILLUMINANCE CONE DIAGRAMS

TDBX15D6LCW

15 Degree Optic

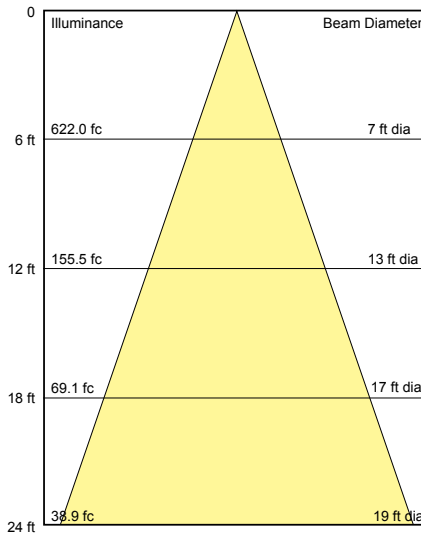
56W TDBX - Color Temp: CW 80 CRI



TDBX20D6LCW

20 Degree Optic

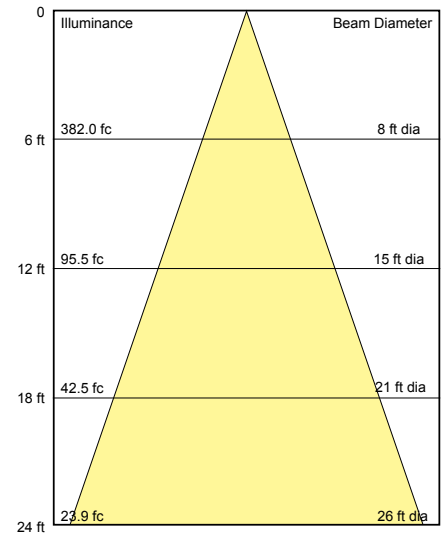
56W TDBX - Color Temp: CW 80 CRI



TDBX25D6LCW

25 Degree Optic

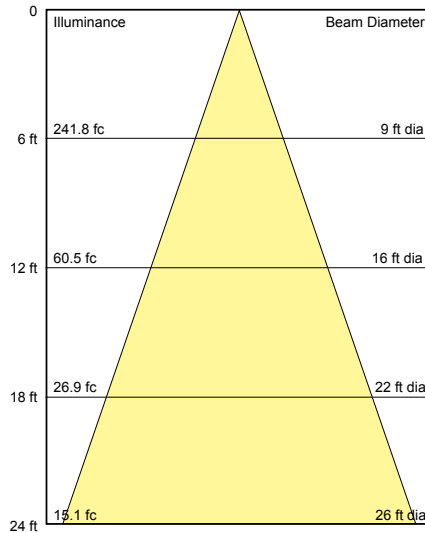
56W TDBX - Color Temp: CW 80 CRI



TDBX40D6LCW

40 Degree Optic

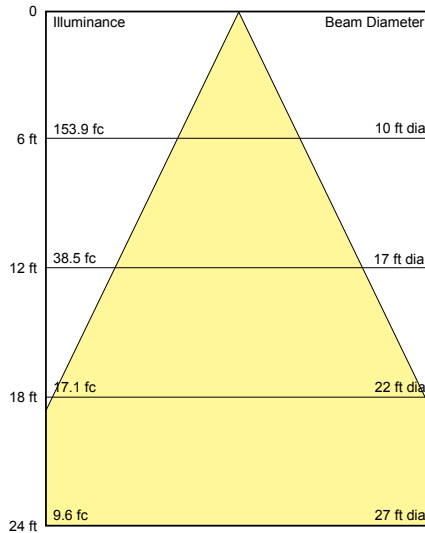
56W TDBX - Color Temp: CW 80 CRI



TDBX60D6LCW

60 Degree Optic

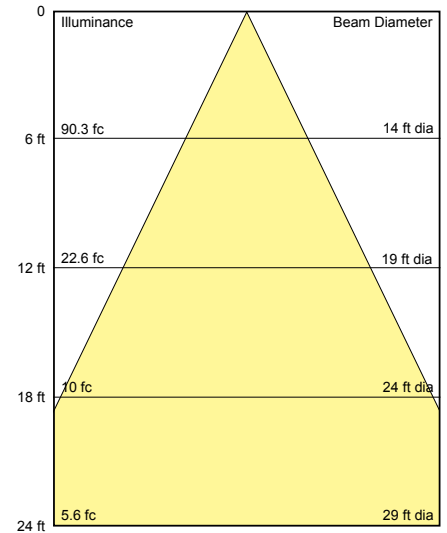
56W TDBX - Color Temp: CW 80 CRI



TDBX90D6LCW

90 Degree Optic

56W TDBX - Color Temp: CW 80 CRI

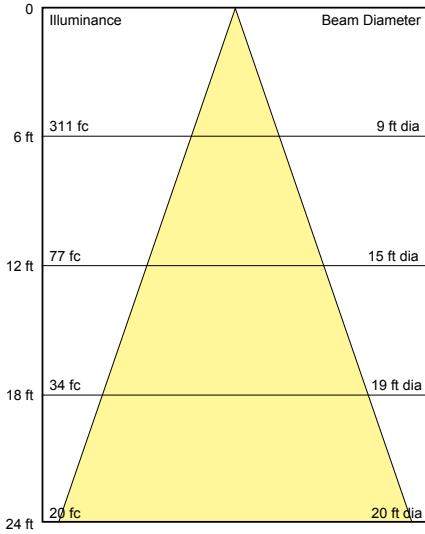


TDBX LED DIRECT BURIAL INGROUND LIGHT

ILLUMINANCE CONE DIAGRAMS continued

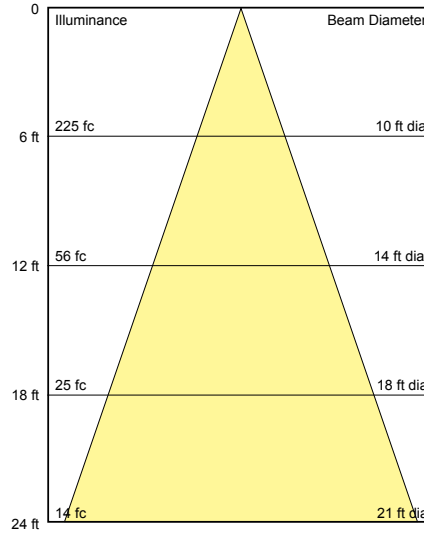
TDBX35D6LCW 35 Degree Optic

56W TDBX - Color Temp: CW 80 CRI

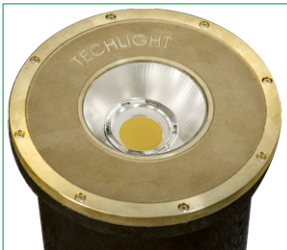
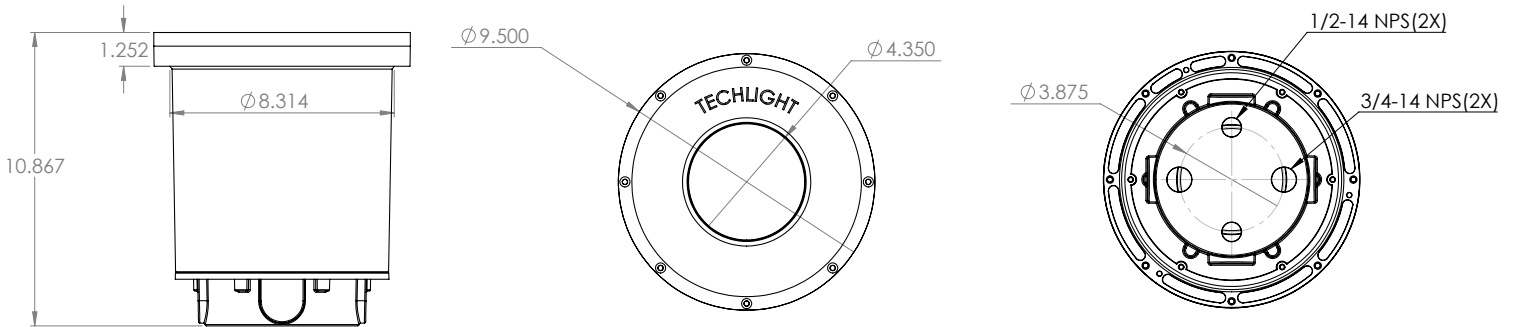


TDBX45D6LCW 45 Degree Optic

56W TDBX - Color Temp: CW 80 CRI



FIXTURE DIMENSIONS



A molded polycarbonate 82mm compact reflector is optimized for use with the LED light source allowing the fixture to be compact while using high efficiency COB LEDs.



A PMMA 90mm Clear molded optic designed specifically to work with COB LEDs is used to achieve a smooth and consistent pattern for specific beam angles



ORDER KIT# K126925

Contains the **TDBX-PK**, Concrete/Paver Install Kit, which is a high grade rolled stainless steel mounting ring used with the **TDBX-RIH**, Rough-In Housing, to provide simple and consistent installation into concrete or pavers. A cover is provided with the rough-in housing to keep debris and concrete out of the fixture housing.



BN = Brushed Nickel Finish



AC = Aged Copper Finish



BC = Bright Copper Finish



TECHLIGHT
INNOVATION IN ILLUMINATION

SRL - Slip Resistant Lens

