



Catalog Number	
Project	Type

## FEATURES & SPECIFICATIONS

**APPLICATION** — This fixture is designed for industrial, institutional and commercial applications as a direct replacement for traditional HID and fluorescent high bays. With 50,000 hours of life at L70 standard and a 5-year limited warranty the fixture maintenance cost is reduced substantially over time.

**CONSTRUCTION** — Low profile body with matte white sloped side members. Three extruded acrylic lens options available.

**FINISH** — Post painted housing and components with a Lighting White Polyester type paint which has a UV stabilizer included with a 93% reflectivity. Raw steel goes through our custom wash system with a mild solvent and pre treatment “rust inhibitor” before passing through a preheat oven. After the paint is applied the fixture then passes through the cure oven for maximum adhesion. Each fixture is painted to a minimum of 2-3 mil thickness for extra durability.

**OPTICAL SYSTEM** — Techlight/Horizon’s state of the art Diffusers set new benchmarks for performance in key metrics such as transmission efficiency for a given level of diffusion or hiding power, beating holographic, surface relief and bulk diffuser techniques. We enable high transmission and a pleasant uniform light at the same time.

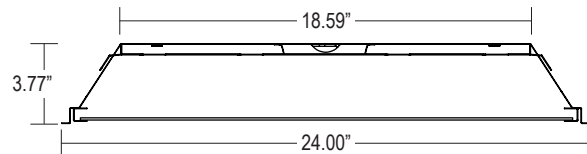
**ELECTRICAL SYSTEM** — Long life LED’s and high efficiency drivers work together to provide superior performance in an efficient package to deliver optimal performance. LED’s available in 3000K, 4000K and 5000K with a CRI >82. Electronic drivers are available in 120/277 volt applications. 0-10V dimming standard.

**LISTINGS** — ETL listed. LM79 and LM80 tested.

**WARRANTY** — The complete luminaire is covered by a 5-year limited warranty.



## 2X4 Lay-In LED Troffer LTR24 SERIES



Series	Housing Height	Length & Width
<b>LTR24</b>	3.77"	48.00" x 24.00"

## ORDERING INFORMATION

Choose the bold face options for the appropriate luminaire configuration for your application and enter on the line above each fixture attribute. Accessories may be factory installed, depending on the particular accessory chosen, but still be ordered as a separate line item.

Example: **LTR24 6 H 40 1**

### LTR24

Series	# of LED Strips	Drive Current	Color Temp/CCT	Voltage	Diffuser
<b>LTR24</b>	<b>2</b> 2 LED Strips <b>3</b> 3 LED Strips <b>4</b> 4 LED Strips <b>6</b> 6 LED Strips	<b>S</b> Standard (700 mA) <b>M</b> Medium (1050 mA) <b>H</b> High (1400 mA)	<b>30</b> 3000K <b>40</b> 4000K <b>50</b> 5000K	<b>1</b> Multi-Volt <sup>1</sup>	<b>Blank</b> .100" #12 Acrylic <b>CA</b> Clear Acrylic <b>OA</b> Opaque Acrylic

### Options (Order as separate line items)

<b>LEB13</b>	1300 Lumen Emergency Ballast
<b>FBF</b>	Fast-Blow Fuse
<b>SBF</b>	Slow-Blow Fuse
<b>AC63</b>	6', 3/8" dia., Armored Flex Cable

#### NOTES

- Actual wattage may differ by ±5% while operating 120/277V ±10%.
- Multi-Volt is 120/277V.

# LTR24 Enclosed LED High Bay

## Technical Data

# of LED Strips	Drive Current	Color Temp	Delivered Lumens			System Wattage	L70 @ 25°C (hrs)	Amperage Draw	
			.100" #12 Acrylic	Clear Acrylic	Opaque Acrylic			120V	277V
2	S (700 mA)	3000K	4703	5228	4277	42W	>50K	0.35 A	0.16 A
		4000K	5043	5607	4660	42W	>50K	0.35 A	0.16 A
		5000K	4917	5466	4825	42W	>50K	0.35 A	0.16 A
	M (1050 mA)	3000K	7054	7842	5536	63W	>50K	0.63 A	0.28 A
		4000K	7565	8411	6032	63W	>50K	0.63 A	0.28 A
		5000K	7376	8200	6246	63W	>50K	0.63 A	0.28 A
	H (1400 mA)	3000K	9405	10456	8823	84W	>50K	0.75 A	0.33 A
		4000K	10087	11214	9462	84W	>50K	0.75 A	0.33 A
		5000K	9835	10934	9226	84W	>50K	0.75 A	0.33 A

# of LED Strips	Drive Current	Color Temp	Delivered Lumens			System Wattage	L70 @ 25°C (hrs)	Amperage Draw	
			.100" #12 Acrylic	Clear Acrylic	Opaque Acrylic			120V	277V
3	S (700 mA)	3000K	7054	7842	6617	63W	>50K	0.55 A	0.24 A
		4000K	7565	8411	7097	63W	>50K	0.55 A	0.24 A
		5000K	7376	8200	6919	63W	>50K	0.55 A	0.24 A
	M (1050 mA)	3000K	10581	11763	9926	94.5W	>50K	0.82 A	0.36 A
		4000K	11348	12616	10645	94.5W	>50K	0.82 A	0.36 A
		5000K	11064	12301	10379	94.5W	>50K	0.82 A	0.36 A
	H (1400 mA)	3000K	14108	15684	13234	126W	>50K	1.12 A	0.49 A
		4000K	15131	16821	14194	126W	>50K	1.12 A	0.49 A
		5000K	14752	16401	13839	126W	>50K	1.12 A	0.49 A

# of LED Strips	Drive Current	Color Temp	Delivered Lumens			System Wattage	L70 @ 25°C (hrs)	Amperage Draw	
			.100" #12 Acrylic	Clear Acrylic	Opaque Acrylic			120V	277V
4	S (700 mA)	3000K	9405	10456	8823	84W	>50K	0.72 A	0.31 A
		4000K	10087	11214	9462	84W	>50K	0.72 A	0.31 A
		5000K	9833	10932	9224	84W	>50K	0.72 A	0.31 A
	M (1050 mA)	3000K	14108	15684	13234	126W	>50K	1.10 A	0.48 A
		4000K	15131	16821	14194	126W	>50K	1.10 A	0.48 A
		5000K	14752	16401	13839	126W	>50K	1.10 A	0.48 A
	H (1400 mA)	3000K	18810	20912	17646	168W	>50K	1.49 A	0.65 A
		4000K	20174	22428	18925	168W	>50K	1.49 A	0.65 A
		5000K	19670	21868	18452	168W	>50K	1.49 A	0.65 A

# of LED Strips	Drive Current	Color Temp	Delivered Lumens			System Wattage	L70 @ 25°C (hrs)	Amperage Draw	
			.100" #12 Acrylic	Clear Acrylic	Opaque Acrylic			120V	277V
6	S (700 mA)	3000K	13991	15554	13124	126W	>50K	1.08 A	0.47 A
		4000K	15005	16682	14076	126W	>50K	1.08 A	0.47 A
		5000K	14630	16265	13724	126W	>50K	1.08 A	0.47 A
	M (1050 mA)	3000K	20986	23331	19687	189W	>50K	1.64 A	0.71 A
		4000K	22508	25022	21114	189W	>50K	1.64 A	0.71 A
		5000K	21945	24397	20586	189W	>50K	1.64 A	0.71 A
	H (1400 mA)	3000K	27982	31108	26249	252W	>50K	2.23 A	0.97 A
		4000K	30010	33363	28152	252W	>50K	2.23 A	0.97 A
		5000K	29260	32530	27449	252W	>50K	2.23 A	0.97 A

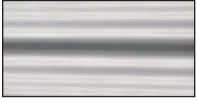
# LTR24 Enclosed LED High Bay

---

## Lens Options

---

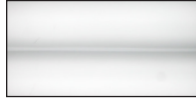
.100" #12 Acrylic



Clear Acrylic



Opaque Acrylic



Horizon Linear Lighting  
2707 Satsuma Drive  
Dallas, TX, 75229  
Phone: 214-350-0591, 800-225-0727, Fax: 214-350-9137  
[www.horizonlightingllc.com](http://www.horizonlightingllc.com)

\*\*All dimensions and specifications are subject to change without notice.\*\*