

Catalog Number	
Project	Type

FEATURES & SPECIFICATIONS

APPLICATION — The high performance luminaire is designed for applications where long life, low maintenance, and consistent color rendering is required. Areas with limited accessibility due to fixture location or where heavy pedestrian traffic makes maintenance difficult are ideal applications such as building facade lighted or wall mounted security lighting. The contemporary design makes the fixture ideal for applications where daytime aesthetics need to be taken into consideration.

CONSTRUCTION — The heavy duty housing is constructed of extruded aluminum. The optical assemblies are sealed in place using a silicone gasket for weather tight protection. Modular LED bricks wired in parallel for ease of maintenance. ETL listed for wet locations (IP64). Additional IP66 rating available upon request. Stainless steel hardware.

FINISH — A Super Durable Polyester powder coat finish is electrostatically applied in our state of the art paint facility. Standard colors available: Black, Bronze, US Green, White. Custom colors available upon request.

OPTICAL SYSTEM — Made with a state of the art UV stabilized acrylic high performance refractive optical assemblies that use high transmissivity materials to achieve precise photometric distributions. Available in Type II, III and IV beam configurations.

ELECTRICAL SYSTEM — Available in up to a 2 brick LED system in 5000K Cool White (+/- 500K) or 4100K Neutral White color temperatures (70 CRI min.) propagated with Philips Lumileds LUXEON® T LED's. Available with 90-300V 50/60 Hz Class II power supply. LED's rated over 425,000 hours (TM21 Calculated L70) at 25°C ambient temperature with 700mA operation. Lumen Maintenance >97% at 50K hrs. 347V and 480V input options available. Standard 0-10V dimming. Fixture provided with integral 10kV surge protection that meets IEEE C62.42.2-2002. Built-in Active PFC Function. LED Power Supply conforms to

LENW SERIES

Enterprise LED Wall Pack



SERIES	HOUSING HEIGHT	LENGTH & WIDTH
LENW	9.26"	16.38" x 17.69"

UL1310 Class 2 and UL8750 standards and is IP67 rated for wet locations. Drive is compatible with ROAM lighting control system.

MOUNTING — Standard mounting options include 10.25" straight arm wall mount and a flush mount wall bracket. Additional mounting options may be available for custom applications.

LISTINGS — LED Power Supply listed for wet locations (IP67). LED bricks ETL listed for wet locations (IP64). Meets US and Canadian safety standards. -40°C to 50°C ambient operation. RoHS Compliant.

ORDERING INFORMATION

Choose the bold face options for the appropriate luminaire configuration for your application and enter on the line above each fixture attribute. Accessories may be factory installed, depending on the particular accessory chosen, but still be ordered as a separate line item.

EXAMPLE:

LENW 2 C 8 T3 C 1 BZ

SERIES	# OF BRICKS	COLOR TEMP	# LED'S PER BRICK	OPTICS	DRIVE CURRENT	VOLTAGE	FINISH
LENW	1 = 1 Brick 2 = 2 Brick	C = Cool White (5000K) N = Neutral White (4100K)	8 = 18 LEDs	T2 = T2 Type II T3 = T2 Type III T4 = T2 Type IV T4A = T2 Type IV Auto	C = 700 mA	1 = Multi-Volt ¹ 2 = 480V 3 = 347V	BZ = Bronze BK = Black GR = US Green WH = White SP = Special ²

ACCESSORIES (Order as separate line items)

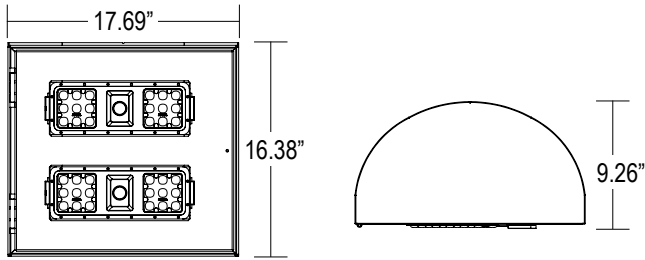
BSP3-277-LC³	Straight Arm Mount (2")
WMSSA	Straight Arm Wall Mount (10.75")
VBWM	Flush Wall Mount Bracket
IP66⁴	Additional IP66 Fixture Rating
LEDOPTIC-W	Spill Light Elimination
LEDOPTIC-B	Spill Light Elimination "Black Out"

NOTES

- ¹ = Multi-Volt is an auto ranging power supply from 100V to 300V input.
- ² = Custom RAL color matching is available. Contact your sales representative for additional info.
- ³ = Specify whether the surge suppressor is to be factory installed in the fixture or field installed on each circuit.
- ⁴ = Additional IP66 rating may not be changed once production has begun on the fixtures.

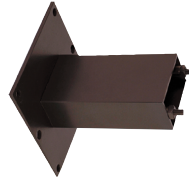
AVAILABLE FIXTURE DIMENSIONS

Dimensions shown are for fixture bodies only. Mounting options must be ordered separately.



MOUNTING ACCESSORIES

WMSSA
Straight Arm Wall Mount (10.75")



VBWM
Flush Wall Mount Bracket



LUMINAIRE CHARACTERISTICS

Cool White (5000K) 700 mA Drive Current

# of LED Bricks	# of LEDs per Brick	Color Temp	Delivered Lumens				System Wattage	L70 @ 25°C	Amperage Draw					
			TYPE II	TYPE III	TYPE IV	TYPE 4A			120V	208V	240V	277V	347V	480V
1 BRICK	18	CW	4056	3993	4041	3992	41	>495K	.35 A	.20 A	.18 A	.15 A	.12 A	.09 A
			B2 U0 G1	B2 U0 G1	B2 U0 G1	B1 U0 G1								
2 BRICK	18	CW	8111	7987	8081	7983	81	>495K	.68 A	.39 A	.34 A	.30 A	.24 A	.17 A
			B3 U0 G2	B3 U0 G2	B3 U0 G2	B2 U0 G1								

Neutral White (4100K) 700 mA Drive Current

# of LED Bricks	# of LEDs per Brick	Color Temp	Delivered Lumens				System Wattage	L70 @ 25°C	Amperage Draw					
			TYPE II	TYPE III	TYPE IV	TYPE 4A			120V	208V	240V	277V	347V	480V
1 BRICK	18	NW	3969	3908	3954	3906	41	>495K	.35 A	.20 A	.18 A	.15 A	.12 A	.09 A
			B2 U0 G1	B2 U0 G1	B2 U0 G1	B1 U0 G1								
2 BRICK	18	NW	7938	7816	7908	7813	81	>495K	.68 A	.39 A	.34 A	.30 A	.24 A	.17 A
			B3 U0 G2	B3 U0 G2	B3 U0 G2	B2 U0 G1								



WARNING: Maintenance performed including the replacement of LED bricks while power is still supplied to the luminaire may result in system failures and will void the warranty.



2707 SATSUMA | DR. DALLAS, TX 75229 | PH: 800.225.0727 | www.techlight.com