



Catalog Number	
Project	Type

FEATURES & SPECIFICATIONS

APPLICATION — The Genesis Gen2 line of LED Landscape Bullets are the most versatile LED fixtures on the market today. Various beam spreads and wattages allow for a customized finish to any property. The high end system was designed for 120-277V operation.

CONSTRUCTION — The die cast aluminum heat sink has 24 heat dissipating fins to maintain a cool operating LED for maximum life. The fins are independently supported to allow for unobstructed airflow. The fixture is designed to efficiently perform in any mounting orientation.

FINISH — A cathodic epoxy electrocoat primer or E-Coat is applied to all die cast aluminum components. E-coating provides the ultimate in corrosion and chemical resistance, providing superior salt spray, humidity and cyclic corrosion endurance. After the E-Coat is applied a super durable polyester powder coat finish is electrostatically applied in our state of the art paint facility. Standard colors available: Black, Bronze, OD Green, White. Custom colors available upon request.

OPTICAL SYSTEM — High-power round LED array that mixes five colors of LEDs to deliver tunable and dimmable white light at 90+ CRI* with color consistency of <2 step MacAdam ellipse (SDCM) across a tuning range of 1600K-6000K. A molded polycarbonate compact reflector is optimized for use with the color tunable LED light source allowing the fixture to be compact. The reflector smooths out and removes any unwanted color-over-angle artifacts from the beam. A 15mm low-iron tempered glass lens protects the light source.

ELECTRICAL SYSTEM — 1600K-4000K or 2700K-6000K tunable color temperature range. Very high color rendering (Ra and R9) over the tunable range. Constant voltage input LED. Unique "Copy and Paste" function for fixture-to-fixture consistency. Calibration mode for color maintenance. Wireless control for dimming and CCT using the Light Commissioning Tool or use Araya Bluetooth App for IOS devices. Maximum 32W operation. Fixture will produce approximately 1800 to 2000 lumens depending on operation settings.

GL2 RGBW SERIES

Color Tunable LED Landscape Bullet

Patent: D0648056



SERIES	HOUSING HEIGHT	LENGTH & WIDTH
GL2	4.8"	7" x 4.3"

MOUNTING — The die cast aluminum mount is secured to the heat sink by stainless steel screws and is sealed with an integral o-ring. A ½" threaded knuckle is provided standard.

LISTINGS — ETL listed for wet locations. Meets US and Canadian safety standards. -40°C to 40°C ambient operation.

WARRANTY — Techlight warrants the LED lighting Product(s) to be free from defects in material and workmanship for a period of three years for LED Light Engines and LED Power Components, from the date of shipment. Ground mounted products that are provided standard with our proprietary E-Coat pretreatment prior to the application of a powdercoat finish will carry a full 10 year finish warranty. Proper maintenance is required for full finish warranty.

ORDERING INFORMATION

Choose the bold face options for the appropriate luminaire configuration for your application and enter on the line above each fixture attribute. Accessories may be factory installed, depending on the particular accessory chosen, but still be ordered as a separate line item.

EXAMPLE:

GL2 FL 32 RGBW 4K 24V BK

GL2						
SERIES	OPTIC	WATTAGE	LED SOURCE	CCT	VOLTAGE	FINISH
	FL = Flood (72°) SP = Spot (20°)	32 = 32W	RGBW = Red, Green, Blue, White	4K = 1600K-4000K, Max 1800L 6K = 2700K-6000K, Max 2000L	24V = 24V	BZ = Bronze BK = Black ODG = OD Green WH = White SP = Special ¹

ACCESSORIES (Order as separate line items)

- GNLV60²** 60W Transformer and Enclosure
- GNLV100²** 100W Transformer and Enclosure
- SMSB** Mounting Stake 12" x 1" (Brass)
- MMSB** Mounting Stake 18" x 1" (Brass)
- LMS** Mounting Stake 20" x 2.5" (SCH 40 PVC)
- LMSB** Mounting Stake 20" x 2.5" (Brass)
- LMSZ-BK** Mounting Stake 20" x 2.5" (Zinc Top Painted Black)
- B01GL** Tree Base with Ground Lug
- B02** Enclosed Conduit Base
- B03** 4" Round 3 Hole Cover
- B10** ½" Hub for Mounting on Driver Enclosure
- B16-12** Palm Tree Base with 12' Strap
- TLSSBBJB** Brass Junction Box
- LCT-01** Light Commissioning Tool

NOTES

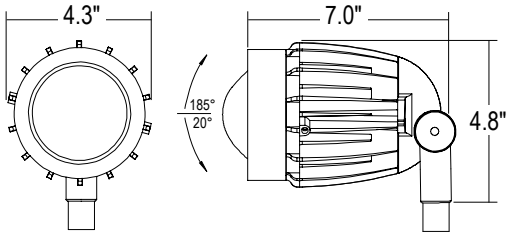
- ¹ = Custom RAL color matching is available. Contact your sales representative for additional info.
- ² = All power supplies are auto ranging voltage 100V to 305V input.



GL2-RGBW Color Tunable LED Landscape Bullet

AVAILABLE FIXTURE DIMENSIONS

Dimensions shown are for fixture bodies only. Mounting options must be ordered separately.



MOUNTING ACCESSORIES

B10
1/2" Hub for Mounting on Driver Enclosure



B16-12
Palm Tree Base with 12' Strap



B03
4" Round 3 Hole Cover



B02
1/2" Conduit Base



B01GL
Tree Base with Ground Lug



TLB800RB
Brass Junction Box



SMSB, MMSB, LMSB, LMS, LMSZ-BK
12" x 1", 18" x 1" and 20" x 2.5" Mounting Stakes



ADDITIONAL FIXTURE ACCESSORIES

GL2CAPCVXFLDREFL
72° Flood OpticapSystem™
Field Installable Flood Optic



Change the optic on the job by simply swapping the OpticapSystem™ on any fixture

102552 (built in fixture)
10kV Surge Protector



PSJ163
16 Gauge 3 Strand Lead Wire



GL2CAPSPOPTREFL
20° Spot OpticapSystem™
Field Installable Spot Optic



Change the optic on the job by simply swapping the OpticapSystem™ on any fixture

TLHB800RCH
Digital Timer



LCT-01
Light Commissioning Tool



The Light Commissioning Tool wirelessly controls the color tuning of the light fixtures. With an intuitive user interface, it scans the network to discover lamps and then enables individual control of on/off, dimming or color temperature

Wireless (2.4GHz) control of the fixtures

- Dimming controls from 100-5%
- Color temperature control from 2700-6000K
- OLED screen to display brightness and dimming levels
- Optical sensor to capture data in the applied environment
- Novel "Copy and Paste" for fixture to fixture consistency
- Calibration to compensate for different aging of LED strings
- Mini USB port for uploading and downloading data

GL2-RGBW Color Tunable LED Landscape Bullet

TRANSFORMERS

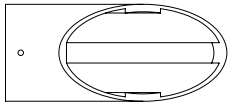
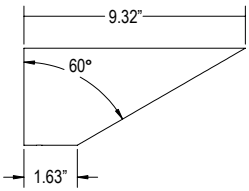


ELV300MV24DCSS
300W DC Transformer in a Stainless Steel Enclosure

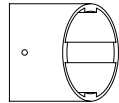
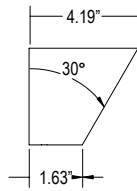
Output Voltage	Input Voltage Range	Output Current Range	Max. Output Power	Typical Efficiency (1)	Power Factor	
					110Vac	220Vac
24 Vdc	90 ~ 305 Vac	0 ~ 12.5 A	300 W	91%	.99	.96

SHIELDS

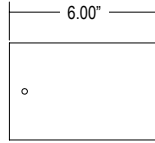
SGL2DN60
Downlight Shield



SGL2UP30
Uplight Shield



SGL2TUBE
Tube Shield



WARNING: Maintenance performed including the replacement of LED bricks while power is still supplied to the luminaire may result in system failures and will void the warranty.



TECHLIGHT
INNOVATION IN ILLUMINATION

2707 SATSUMA DR. | DALLAS, TX 75229 | PH: 800.225.0727 | www.techlight.com