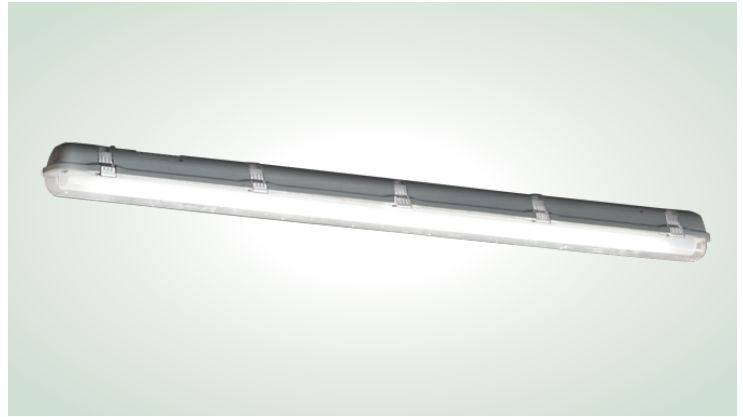




## Wet Location Vapor Tight

Catalog Number	
Project	Type



### FEATURES & SPECIFICATIONS

**APPLICATION** — Great for gyms, walk in coolers, parking garages, canopies and other sensitive areas. Suitable for indoor and outdoor applications.

**CONSTRUCTION** — The fixture is completely water-proof, dust-proof and corrosion resistant. Fixture features a metal gear tray inside a reinforced ABS housing, a polycarbonate diffuser and positive cam stainless steel latches. Provided with an internal frosted diffuser to eliminate glare and provide a smooth distribution pattern. Diffuser provides 120 degree light distribution.

**FINISH** — Gray color impregnated fiberglass housing.

**OPTICAL SYSTEM** — High efficiency linear LED strips provide a medium light distribution pattern and exceptional horizontal and vertical performance.

**ELECTRICAL SYSTEM** — Long life LED's and high efficiency drivers work together to provide superior performance in an efficient package to deliver optimal performance. LED's provided in 4000K with a CRI >80. Electronic drivers are available in 120/277 volt applications.

**MOUNTING** — The fixture can be quickly mounted via provided stainless steel mounting clips. The clips allow for suspended or surface mount installation.

**LISTINGS** — ETL listed. IP65 rated for wet locations.

**WARRANTY** — The complete luminaire is covered by a 5-year limited warranty.

### ORDERING INFORMATION

Choose the bold face options for the appropriate luminaire configuration for your application and enter on the line above each fixture attribute. Accessories may be factory installed, depending on the particular accessory chosen, but still be ordered as a separate line item.

EXAMPLE:

**E2VP 4 40 4L CLR 1 GRY**

E2VP						
SERIES	LENGTH	COLOR TEMP/CCT	NOMINAL LUMENS	LENS	VOLTAGE	HOSTAGE COLOR
	<b>2</b> = 2' <b>4</b> = 4' <b>8</b> = 8'	<b>40</b> = Neutral White (4000K)	2L = 2000 Lumens } 2' Models Only 4L = 4000 Lumens } 6L = 6000 Lumens } 4' Models Only 8L = 8000 Lumens } 10L = 10000 Lumens } 8' Models Only 12L = 12000 Lumens } 14L = 14000 Lumens }	<b>CLR</b> = Clear Ribbed	<b>1</b> = Multi-Volt <sup>1</sup>	<b>GRY</b> = Grey <b>WH</b> = White (4' only)

### ACCESSORIES (Order as separate line items)

### NOTES

<sup>1</sup> = Multi-Volt is an auto ranging power supply from 100V to 300V input.

**10JC** (3) S Hooks and 10' Jack Chain Set  
**G10** 10' Aircraft Cable w/ 12" Arms (Set of 2)  
**THE** Tong Hanger, End Mount (Set of 2)

**STC63** 6' x 3X 18AWG, 1/2" Seal Tight Conduit with 1/2-14 NPT threaded fittings  
**STC64** 6' x 4X 18AWG, 1/2" Seal Tight Conduit with 1/2-14 NPT threaded fittings

### TECHNICAL DATA

Length	Wattage	Nominal Lumens	4000K Delivered Lumens
2 = 2'	17	2L	1966
	34	4L	3735
4 = 4'	34	4L	3780
	49	6L	5570
	68	8L	7416
8 = 8'	98	10L	10080
	114	12L	11710
	136	14L	14280

#### Energy Analysis

Input Voltage	120/277V
Nominal Lumen Output	2000~14000 Lumens
CCT	4000 Kelvin
CRI	80 (minimum)
Life Time Rating	50,000 hrs @ L70
Input Frequency	50/60 Hz
Power Factor	>0.9

#### Fixture Analysis

Dimensions	26.10" x 4.88" x 3.43" (2' model) 49.80" x 4.88" x 3.43" (4' model) 97.80" x 4.88" x 3.43" (8' model)
Mounting	Surface or suspended
Weight	9~28 lbs
Warranty	5-Year Limited

